

Description:

Type and Dimensions: 20' steel container (6058x2438x2591mm)

Construction: All-welded-profiled steel 3mm including crossmembers and all corner posts.

Forklift Pockets: 3 mm welded profiled steel, distance – center: 900 mm.

Corner fittings: Welded corner fittings, thickness 6mm.

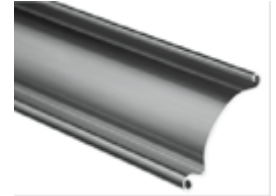
Walls and Roof: Vertically corrugated steel 1.2-1.5mm. Walls are equipped with passive air vents.

Floor: HBSp- laminated plywood floor 21mm, water resistant

Container Door: 1 pcs of horizontally corrugated steel door made of 1.5mm thick steel 1000x2000mm with rubber gasket, cylindrical lock and handles. Right or left hinged- product of METAL CONTAINER, a.s. **Position:** short side 2438mm

1 pcs of manual roll-up garage doors with a handle made of galvanized steel profiles 0,8mm thick. The doors will be locked with the keys. Driving drum will be mounted inside.
Standard color: galvanized steel

Dimension of roll-up garage doors: 2600x2000mm



Decals: word: **KVÆRNER**, will be glued on one long side 6058 and two short sides 2438mm in color black.

Surface Treatment: Synthetic paint (zinc phosphate with alkyd resin), thickness of the primer: 60 µm, thickness of the top layer: 60 µm. Surface preparation according to ST3 Standard.

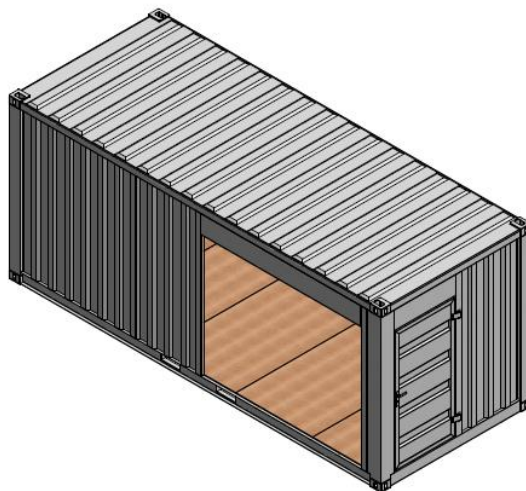
RAL OUT: Standard (RAL 7015, 7016, 7022, 7035, 9010, 9002, 5010).

RAL IN: 7035

Manipulation: forklift/ crane. Manipulation with empty container only.

Certification: ISO 9001: 2008, TÜV ISO 3834-2, Certificate on Penetrant Testing level2, Certificate on Visual Testing level2, Certificate 1090.

STORAGE CONTAINERS PRODUCED, ARE TO BE USED SOLELY FOR STORAGE PURPOSES AND ARE NOT DESIGNED FOR SHIPPING.



Floor: HBSp- plywood floor 21mm